

EVoline[®] V-Port



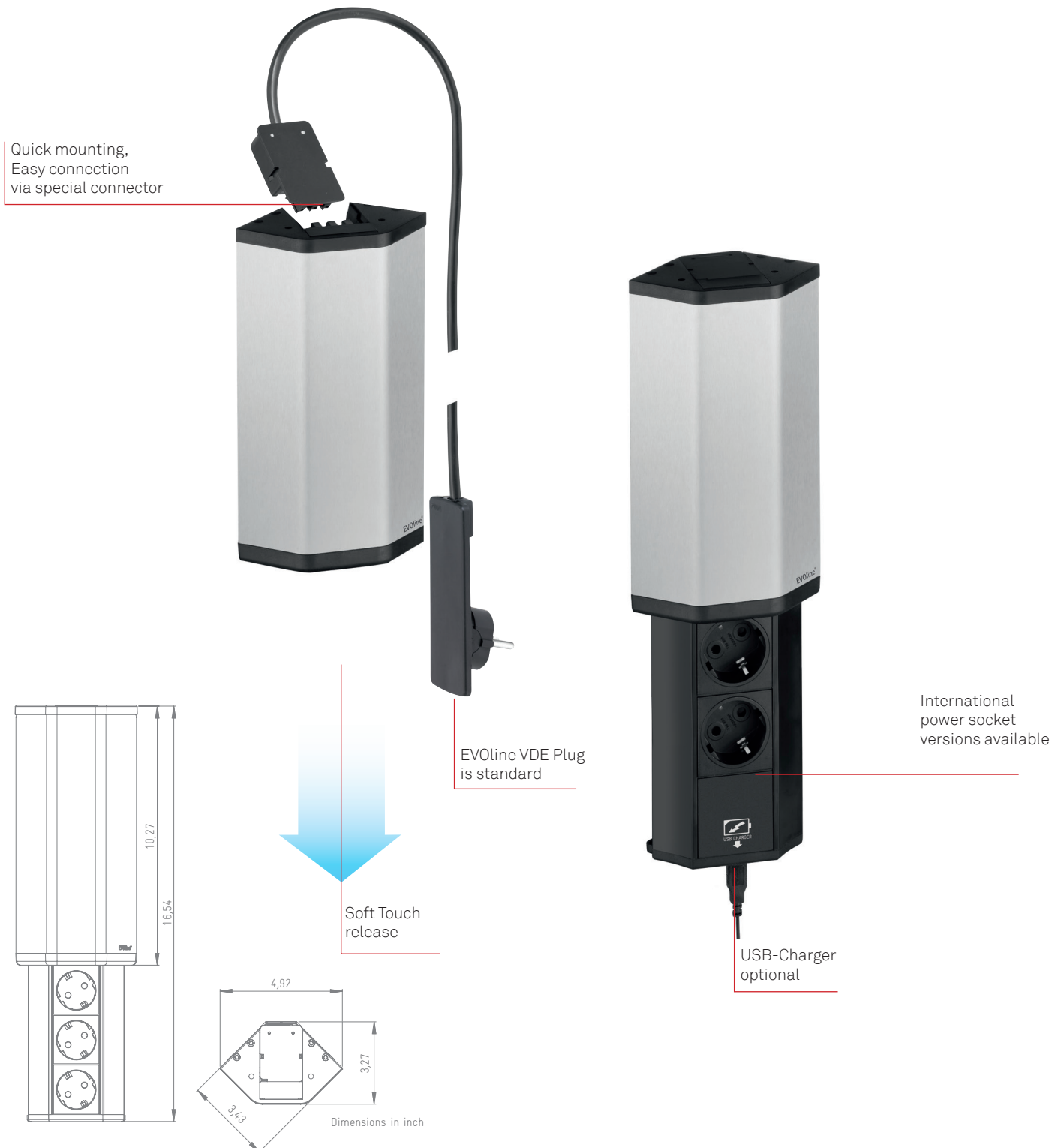
invented and made by
Schulte Elektrotechnik,
Lüdenscheid, Germany

Connectivity for corners everywhere.

EVoline® V-Port

In kitchens, you often find unused space underneath a wall cabinet, in corners and next to tall cupboards. This is where the EVoline V-Port can be installed.

In its closed position, the V-Port is concealed behind a discreet and elegant aluminium cover in stainless steel optics. A gentle touch releases a multiple socket rail. As option available with USB charger.



| Description | Picture | Specifications | Order Number |
|------------------------------------------------------------------------------------------------------------------------------------------------------------------------------------------------------------------------------------------------------------------------------------------------------------------------------------------------------------------------------------------------------------------------------------------------------------------------------------------------------------|-------------------------------------------------------------------------------------|-------------------------------------------------|-----------------------|
| <p>EVOLine V-Port 2-gang</p> <p>Aluminium housing, black anodised, with aluminium cover in stainless steel optics, for right-angle installation. 2× VDE-compliant socket, 60°, 16 A, contact-protected. Power supply cable 2.5 m with plug-in connector. All configurations with VDE-compliant sockets with fixed EVOLine Plug. Other versions with wire end ferrules and country-specific plug, supplied unattached.</p> |  | <p>Aluminum cover in stainless steel optics</p> | <p>1593 4500 0200</p> |
| <p>EVOLine V-Port 3-gang</p> <p>Aluminium housing, black anodised, with aluminium cover in stainless steel optics, for right-angle installation. 3× VDE-compliant socket, 60°, 16 A, contact-protected. Power supply cable 2.5 m with plug-in connector. All configurations with VDE-compliant sockets with fixed EVOLine Plug. Other versions with wire end ferrules and country-specific plug, supplied unattached.</p> |  | <p>Aluminum cover in stainless steel optics</p> | <p>1593 4500 0100</p> |
| <p>EVOLine V-Port 2-gang with USB-Charger*</p> <p>Aluminium housing, black anodised, with aluminium cover in stainless steel optics, for right-angle installation. 2× VDE-compliant sockets, 60°, 16 A, contact-protected. Supply cable 2.5 m with plug-in connector. All configurations with VDE-compliant sockets with fixed EVOLine Plug. Other versions with wire end ferrules and country-specific plug, supplied unattached.</p> <p>1x USB Type A Charger, rated output current: 1 A,</p> |  | <p>Aluminum cover in stainless steel optics</p> | <p>1593 4500 0300</p> |

* The USB charging function cannot be guaranteed due to the multitude of manufacturers and devices on the market.

EVoline®

USA

Schulte Electro Systems Corp.

41W020 Seavey Road
Sugar Grove, IL 60554-9573

Telephone +1 (0) 630 / 409 9445
Telefax +1 (0) 630 / 406 0505

E-Mail info@evoline-usa.com
Internet www.evoline-usa.com

Germany

Schulte Elektrotechnik GmbH & Co. KG

Juengerstraße 21
D-58515 Luedenscheid

Telephone +49 (0) 23 51 / 94 81-0
Telefax +49 (0) 23 51 / 4 26 58

E-Mail info@schulte.com
Internet www.evoline.com

