

WIRELESS CHARGING for new iPhone and Android



Schulte Electro Systems Corporation

schulte
elektrotechnik

invented and made by
Schulte Elektrotechnik,
Lüdenscheid, Germany

41W020 Seavey Road
Sugar Grove, IL 60554-9573
USA

Phone
e-mail
Internet

+1 630-409-9445
sales@evoline-usa.com
www.evoline-usa.com

EVoline® Dock Square



EVoline Dock Square, the new generation of on-Desk systems, provides a mobile, compact and flexible solution for the workspace.

Starting with the Dock Square Basic up to the individually configurable versions, interchangeable modules for Data and Multimedia facilitate timeless and almost unlimited flexibility as connectivity requirements evolve.

An easy adhesive fixing simplifies the installation. The adhesive connection is removable at any time enabling the Dock Square to be placed in another position. **Even on Glass!**

UL certification in process.

EVoline® Square80



EVoline Square80 fits into standard openings that are pre-made with a diameter of 80 mm. It provides a power socket, a USB charger, and a data connection.

In its Qi version EVoline Square80 offers an additional wireless charging surface integrated into the cover, for charging of Qi capable mobile phones.



[Relocatable Power Tap]
E363662

UL listed and tested to meet UL 1363. Electrical codes vary by location. Please check with your electrician to verify that this unit meets your local code before installing.

EVoline® Wireless Charger



EVoline Wireless Charger allows charging of any Qi-capable device without cables or any other accessories on a single charging station.

Installed below the desk or work surface makes the charger completely invisible. It also may be mounted into a Ø 80 mm opening.

Place the device to be charged simply on the work surface above – pure minimalism.



Qi-Certified ID 2904

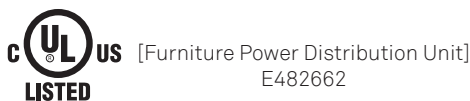
The EVoline Wireless Charger is certified according to WPC Standard Spec. 1.2.2 "Qi".

EVoline® Port



EVoline Port let sockets and cables simply disappear. Just the collar and cover of the Port are visible on the work surface.

The easy pull-up motion let the high-quality aluminium body appear and subsequently a push-down motion let it disappear below the surface even with attached plugs. The patented rocking cover creates enough space for a cable outlet.



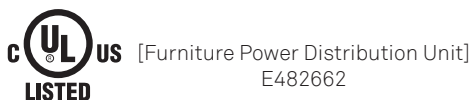
UL listed and tested to meet UL 962A with 1 – 5 socket outlets. Electrical codes vary by location. Please check with your electrician to verify that this unit meets your local code before installing.

EVoline® FrameDock



EVoline FrameDock is a flush fitting system which can be installed horizontally or vertically - be it on a desk, a kitchen worktop, a wall, or a side of a piece of furniture. It can be mounted almost everywhere due to its low mounting depth of 51 mm and installation from the top:

High quality design, customisable components and yet discreet.



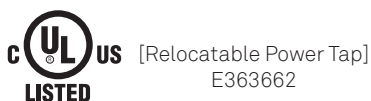
UL listed and tested to meet UL 962A with 1 – 8 socket outlets. Electrical codes vary by location. Please check with your electrician to verify that this unit meets your local code before installing.

EVoline® Dock



EVoline Dock sits above the desk allowing maximum workspace. Various fixing options are available like EVoline Quicklock, clamps, pillars, etc.

The configurable charging and data station can be equipped with the complete EVoline Modules range.



UL listed and tested to meet UL 1363 with 1 – 8 socket outlets. Electrical codes vary by location. Please check with your electrician to verify that this unit meets your local code before installing.

EVoline® R-Dock



EVoline R-Dock can be installed into any right-angled corner.

With its flat back and angled front fascia, it is comfortable to use. Freely configurable.



[Furniture Power Distribution Unit]
E482662

UL listed and tested to meet UL 962A with 1 – 8 socket outlets. Electrical codes vary by location. Please check with your electrician to verify that this unit meets your local code before installing.

EVoline® V-Dock



The EVoline V-Dock gives dead corners a benefit.

It can be installed horizontally or vertically and is variable in length. In addition, the supply cable is concealed using the space between the back of the profile and the wall corner.

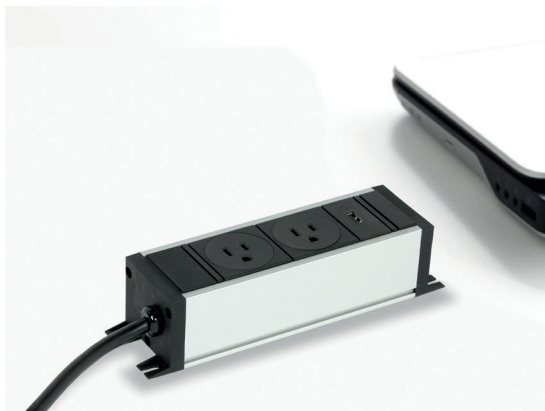
Thanks to the V-Docks 45 degree alignment power and data cables are easy to connect.



[Furniture Power Distribution Unit]
E482662

UL listed and tested to meet UL 962A with 1 – 8 socket outlets. Electrical codes vary by location. Please check with your electrician to verify that this unit meets your local code before installing.

EVoline® U-Dock



EVoline U-Dock can be mounted to any work surface in various ways.

As a robust base for a professional power and data supply, the freely configurable aluminium profile can be equipped with various power and data modules as well as safety devices for protection of personnel and machinery.



[Furniture Power Distribution Unit]
E482662

UL listed and tested to meet UL 962A with 1 – 8 socket outlets. Electrical codes vary by location. Please check with your electrician to verify that this unit meets your local code before installing.