




Square (Qi)

Charging
function
for mobiles



Slider with added value

Cable apertures in desks are standard. This standard opening in the work surface can offer you more than just a hole with cover. EVOLine Square provides a socket, a USB-Charger and a data connection inside the 80 mm diameter. Even in closed position EVOLine Square gives you a smart offer: The sliding cover in its Qi-Version provides an inductive technology for wireless charging of suitable mobiles.

Description	Image	Specification	Order No.
<p>EV0line Square (QI) for worktops with max. thickness of up to 50 mm Mounting hole: Ø 80 mm</p> <p>Equipped with: 1x socket with contact protection Germany, Austria 1x USB Charger Typ A, charging function only without PC connection for standard devices with USB connection</p> <p>fixed supply cable 3,0 m with plug</p>		<p>Without Qi-charging function</p> <p>Cover black with CAT 6 socket with 3,0 m cable and plug with CAT 6 patchcable 3,0 m without data connector</p> <p>With Qi-charging function</p> <p>Cover black with CAT 6 socket with 3,0 m cable and plug with CAT 6 patchcable 3,0 m without data connector</p> <p>Other cover colours available on request</p>	<p>1592 7000 0100 1592 7000 0200 1592 7000 0300 1592 7000 0400 1592 7000 0500 1592 7000 0600</p>

The charging function cannot be
guaranteed for all devices due to
the large amount of different
suppliers.



Fits
into a
80 mm hole



with
USB Charger




Estimated availability from June



Backward somersault on the worktop.

Always available, but never in your way. In closed position EVOLine Backflip is just a thin plate on the worktop. With the touch of a finger it turns 180 degrees and shows its useful side: USB Charger and sockets sit high above the worktop providing greater protection against liquid spillages. Nevertheless the mounting depth is 53 mm only allowing installation on top of a drawer or other devices.

Description	Image	Specification	Order No.
<p>EV0line Backflip for worktops with max. thickness of 40 mm. Total installation depth: 53 mm</p> <p>Equipped with: 2x socket with contact protection Germany, Austria 1x USB Charger Typ A, charging function only without PC connection for standard devices with USB connection</p> <p>fixed supply cable 2,5 m with end splices plug supplied unattached</p>		<p>Finish: Solid stainless steel, brushed Rotating part: black plastic</p> <p>Other finishes available on request</p>	1592 7100 0100

The charging function cannot be
guaranteed for all devices due to
the large amount of different
suppliers.

A finger
touch
is enough



With
USB
Charger



Estimated availability from 3rd quarter



Automated power suspension

In kitchens, you will often find unused space underneath the wall cabinets, especially in corners and next to tall cupboards. This is where the EVoline V-Port can be installed. In its closed position, the V-Port is concealed within a discreet and elegant stainless steel housing. A gentle touch releases and drives down an individual multiple socket rail; as an option a USB charger module is available.

Description	Image	Specification	Order No.
<p>EVoline V-Port</p> <p>For assembly in corners.</p> <p>Black anodised aluminium profile, Stainless steel housing, sockets, 60°, 16 A, with contact protection.</p> <p>Germany, Austria, etc.</p> <p>Power supply module: 2,5 m cable with Wago socket and EVoline Plug</p>		<p>V-Port 2 way socket rail with two sockets</p> <p>V-Port 3 way socket rail with three sockets</p>	<p>1593 4500 0200</p> <p>1593 4500 0100</p>

EVoline V-Port 2 sockets with USB-Charger

For assembly in corners.

Black anodised aluminium profile, Stainless steel housing, sockets, 60°, 16 A, with contact protection.

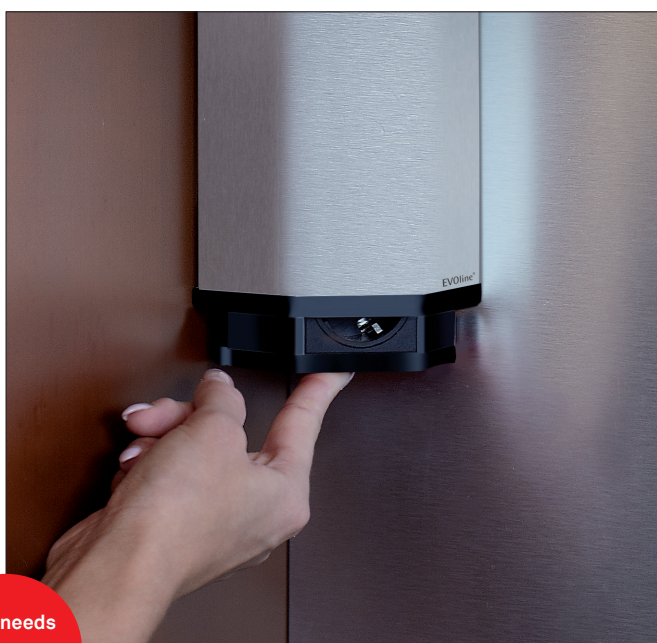
Germany, Austria, etc.

Power supply module: 2,5 m cable with Wago socket and EVoline Plug



V-Port 2 way with USB-Charger with two sockets and USB-Charger

The charging function can not be guaranteed for all devices due to the large amount of different suppliers.



Just needs the press of a finger



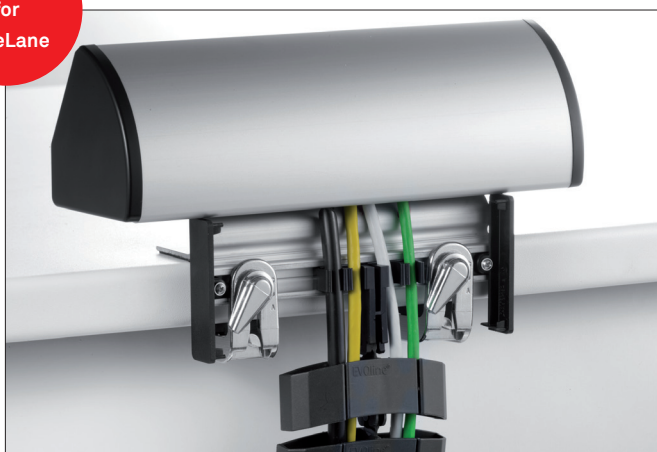


Concealed usage

Functionality and design should not end at the desk edge. EVoline Quicklock is an elegant and intelligent solution to attach an EVoline Dock to a desk. Quicklock fixing is very fast and need no tools. Power- and Data-cables are hidden by a cover. Nearly all length options allow to snap-in EVoline WireLane to guide the cables concealed to the floor. By the way - EVoline Quicklock can be retrofitted on existing Docks.

Description	Image	Specification	Order No.
<p>EV0line Quicklock</p> <p>Dock fixing with covered cable routing and 2 fasteners.</p> <p>For deskplate thicknesses from 18 to 32 mm.</p> <p>Mounting without tools.</p> <p>Protective cover on the fasteners.</p> <p>Usable for Dock & R-Dock profiles</p>		<p>Length: 100 mm</p> <p>Length: 150 mm with WireLane snap-in</p> <p>Length: 200 mm with WireLane snap-in</p> <p>additional lengths on request</p>	<p>1599 0909 9200</p> <p>1599 0909 9000</p> <p>1599 0909 9100</p>

Connection
for
WireLane



Connection to EV0line WireLane

Fast
mounting



Covered
cable
routing



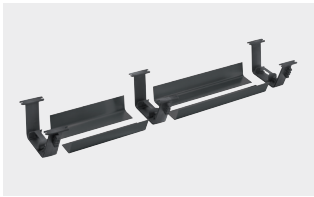
easy mounting
under the table



Storage system

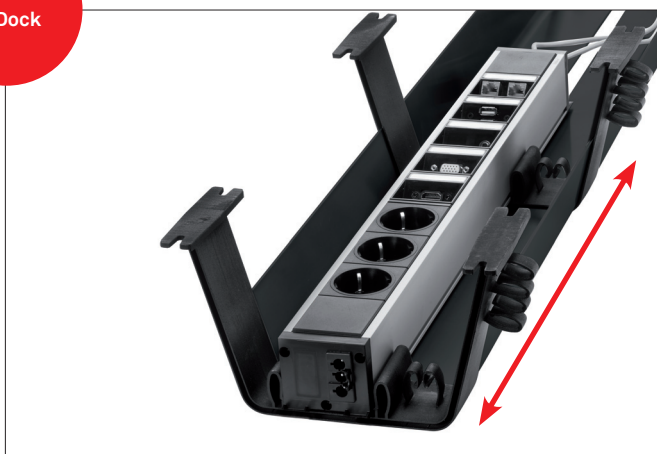
Not all power and data connections in a modern workplace need to be accessible on the table. Often people wish to have a clear, clutter free workspace:

The EVoline Rail, custom made for EVoline U-Dock or EVoline Express. All cabling disappears underneath the table. The aluminum tray with plastic holders offers room for accurate cable guidance and supports further implementation of EVoline WireLane.

Description	Image	Specification	Order No.
<p>EVoline Rail for mounting under the table, version for EVoline U-Dock or EVoline Express available</p> <p>Black plastic holders and aluminium profiles</p>		<p>Version for EVoline U-Dock 2 plastic holders with 2 aluminium profiles</p> <p>Profile length 150 mm Profile length 300 mm Profile length 500 mm</p> <p>3 plastic holders with 4 aluminium profiles</p> <p>Profile length 2 x 300 mm Profile length 2 x 400 mm</p> <p>Version for EVoline Express 2 plastic holders with 2 aluminium profiles</p> <p>Profile length 165 mm (for 3 pcs.) Profile length 215 mm (for 4 pcs.)</p>	<p>1593 5400 0700 1593 5400 0100 1593 5400 0200</p> <p>1593 5400 0500 1593 5400 0600</p> <p>1593 5400 0300 1593 5400 0400</p>

Different profile lengths on request.

movable
U-Dock



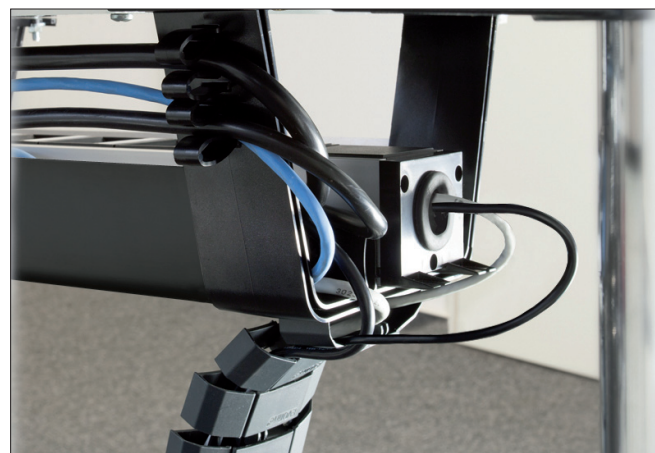
Rail for the EVoline U-Dock



Rail for the EVoline Express



accurate
cable
guidance



Schulte Elektrotechnik GmbH & Co KG

Postfach 27 08 / 27 32
58477 Lüdenscheid
Germany

Jüngerstraße 21
58515 Lüdenscheid
Germany

Phone +49 23 51 / 94 81 - 0
Fax +49 23 51 / 4 26 58
e-mail info@schulte.com
Internet www.evoline.com

